



Sustainability

The University of Hong Kong

Joy Lam, Sustainability Office
joytllam@hku.hk

Why the University?

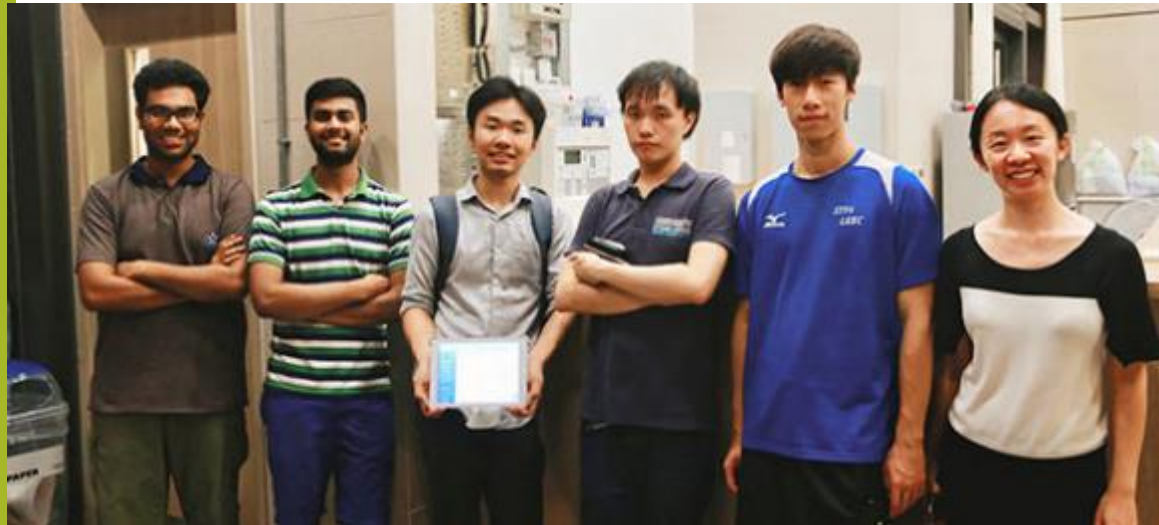
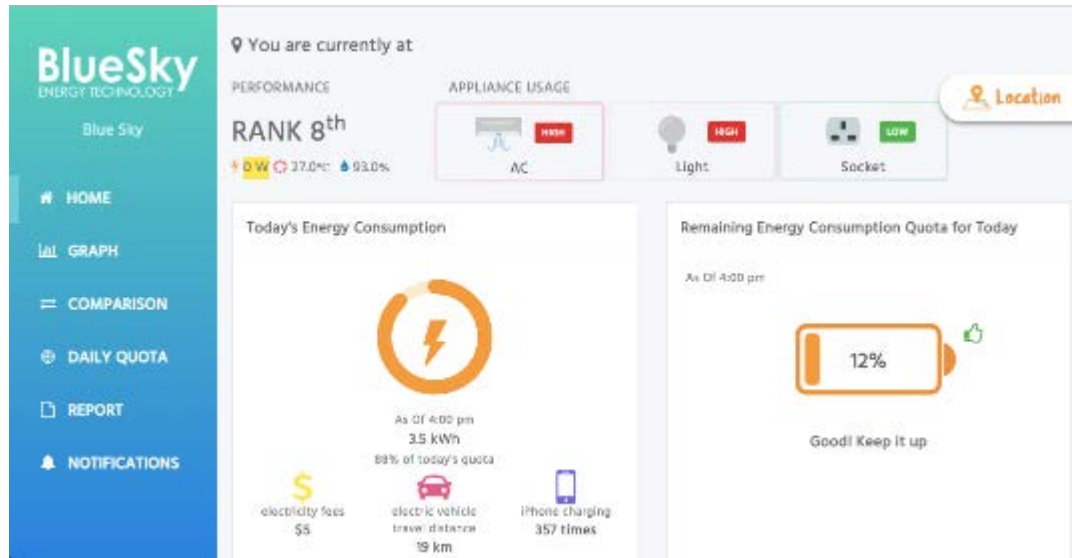
- Centers for Research & Teaching
- Campus Environmental & Social Impact
- Models for the Community
- Students



UNEP Greening Universities Toolkit: The Sustainable University

Institution's vision, mission and governance	Integration of sustainability across the curriculum	Dedicated research on sustainability topics	Outreach and service to the wider community	Campus planning, design and development
Physical operations and maintenance	Foster equity, diversity and quality of life	The campus as "living laboratory"	Celebration of cultural diversity and application of cultural inclusivity	Cooperation among universities

A campus that uses sustainable practices in all aspects of its planning, operations, and maintenance



A community that is involved
and invested in making our
university a sustainable
environment



Be Part of It
DITCH DISPOSABLE



THE UNIVERSITY OF
HONG KONG
SUSTAINABILITY

[HOME](#)

[WHAT](#)

[WHY](#)

[HOW](#)

[WHO](#)

[WHEN](#)

[MORE](#)

DITCH DISPOSABLE!

choose reusable



What's Ditch Disposable?

WWW.SUSTAINABILITY.HKU.HK

An **economic** structure that uses sustainability as a guiding principle

Green Revolving Fund



A governance system that allows for action

Statement | Goals | Strategy and Action Plan



“The principles of sustainability will guide our planning and development at every level”



THE UNIVERSITY OF
HONG KONG
SUSTAINABILITY



www.sustainability.hku.hk



sustainability@hku.hk



HKU Sustainability